

LOCKS

ELECTROMAGNETIC LOCKS

Electromagnetic locks have become popular due to the lack of moving parts, quietness of operation and holding strength. They are used in many situations and are the preferred device for access point where a large number of entries and exits have to be controlled.

LK117 Maglock SP 150kg

SECURI-PROD

- 150Kgs holding force
- Dual voltage 12 & 24 VDC
- Current drawn 300mA / 150mA
- MOV surge protection
- Fail-Safe type
- Unmonitored Model
- CE approved
- Dimension: 170(L) x 36(W) x 24(D) mm



LK118 Maglock Sp 300kg with LED

SECURI-PROD

- 300Kgs holding force
- Dual voltage 12 & 24 VDC
- Current drawn 500mA / 250mA
- MOV surge protection
- Fail-Safe type
- Monitored (with LED, Hall effect IC & NO/NC relay)
- CE approved
- Dimension: 250(L) x 41(W) x 26(D) mm

LK119 Maglock SP 600kg with LED

SECURI-PROD

- 600Kgs holding force
- Dual voltage 12 & 24 VDC
- Current drawn 500mA / 250mA
- MOV surge protection
- Fail-Safe type
- Monitored (with LED, Hall effect IC & NO/NC relay)
- Push-off button on armature for instant release
- CE approved
- Dimension: 265(L) x 66(W) x 20(D) mm

LK117-1 BRACKET ZL for SP 150kg Maglock

LK117-2 BRACKET L for SP 150kg Maglock

LK117-3 BRACKET U for SP 150kg Maglock

LK118-1 BRACKET ZL for SP 300kg Maglock

LK118-2 BRACKET L for SP 300kg Maglock

LK118-3 BRACKET U for SP 300kg Maglock

LK119-1 BRACKET ZL for SP 600kg Maglock

LK119-2 BRACKET L for SP 600kg Maglock



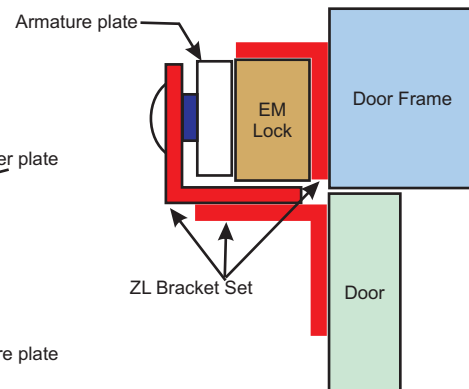
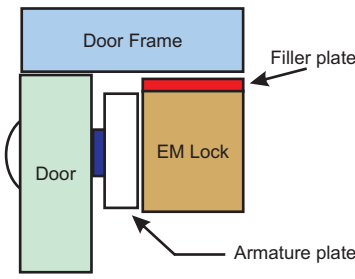
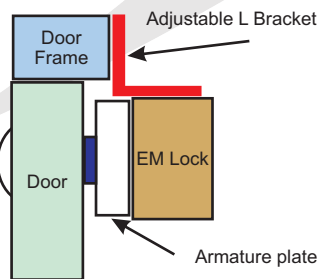
U Bracket



ZL Bracket



L Bracket



BRANCHES COUNTRYWIDE

www.REGALSECURITY.co.za

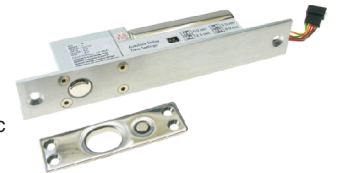
LOCKS

ELECTROMAGNETIC LOCKS

LK120 Bolt Action Lock SP (Fail Safe)

Dimension: 200(L) x 32(W) x 40(D) mm
 Fail-Safe: 90(L) x 26(W) x 2(D) mm
 Strike Plate: 15.5mm Diameter, 17mm Throw

- 12V Operation
- Operation Current 900mA
- Holding Current 350mA
- Fail-Safe type - power to lock
- Operation Delay Time: 0 sec, 2.5 sec, 5 sec, 9 sec
- Built-in Delayed Egress, Control Point



LK120-1 Surface Mount Bracket

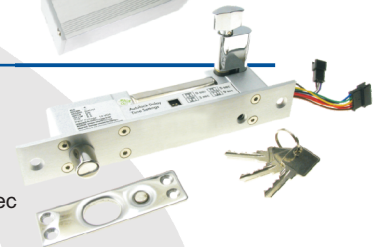
- Surface mount housing for LK120
- Lock housing dimensions: 230mm L x 44mm W x 44mm D
- Receptacle housing dimensions: 120mm L x 44mm W x 44mm D



LK121 Bolt Action Lock SP (Fail Secure)

Dimension: 200(L) x 32(W) x 40(D) mm
 Fail-Secure: 90(L) x 26(W) x 2(D) mm
 Bolt Stainless Steel: 15.5mm Diameter, 16mm Throw

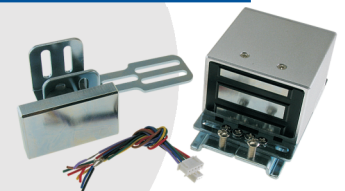
- 12V Operation
- Operation Current 900mA
- Holding Current 350mA
- Fail-Secure type - power to open
- Operation Delay Time: 0 sec, 3 sec, 5 sec, 9 sec
- Built-in Delayed Egress, Control Point



LK122 Maglock - Sliding Door

Dimension: 110(L) x 89(W) x 56(H) mm
 Magnetic Lock Body: 40(L) x 65(W) x 136(H) mm
 Armature: 1.1kg
 Adjustable width: 59mm - 89mm

- Multi-voltage operation: 12VDC/110VAC/220VAC
- Maximum holding force: 80kg
- Armature adjustable - horizontally / vertically
- Built-in photocoupler connects with egress delay circuit push button point for easy installation



LK55 SEP Maglock Surface Mount with Quick Mount Bracket

- SEP 230 / 54S & B
- 12VDC Side Mount, Slimline & Bracket

LK57 SEP Maglock 300kg Front Mount

- SEP 200 / 54F
- 12VDC Face Mount, Slimline



LK61 SEP Maglock Quick Mount Bracket

LK62 SEP Maglock U-Bracket

LK63 SEP Maglock Z-Bracket

- SEP mounting brackets for all top, side and glass mount applications



LK126 Maglock Stainless Steel 360kg Outdoor

LK127 Maglock Stainless Steel 550kg Outdoor

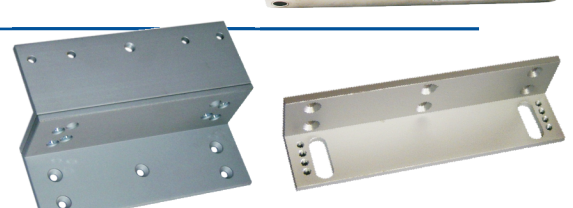
- 220mm L x 46mm W x 29mm D (360kg)
- 220mm L x 66mm W x 40mm D (550kg)
- Dual Voltage: 12/24VDC; 500/250mA
- Monitored with reed sensor only (NO/NC dry contact)
- MOV surge protection
- CE approved



LK128 Bracket ZL for Outdoor Maglock

LK128-1 Bracket L for Outdoor Maglock

- For use with LK126 and Lk127 Outdoor Maglocks



LOCKS

LOCKS

GATE LOCKS

LK29-1 Gate Latch Lock - 25mm

- Lock dimensions : 90mm x 37mm x 15mm

LK30-1 Gate Latch Lock - 40mm

- Lock dimensions : 90mm x 52mm x 15mm

- Faceplate dimensions : 146mm x 23mm
- Complete with 62mm length cylinder and 3 keys
- Mounts into door or gate frame



LK28 Gate Lock Cylinder

- 62mm length cylinder
- Supplied with 3 keys



LK29 Gate Latch Lock

- Faceplate dimensions : 146mm x 23mm
- Lock dimensions : 90mm x 37mm x 15mm
- Excludes cylinder and keys



LK32 Gate Lock Housing - 25mm

- Surface mount steel gate lock housing for (LK29-1)
- Dimensions : 164mm length x 40mm width x 46mm depth

LK33 Gate Lock Housing - 40mm

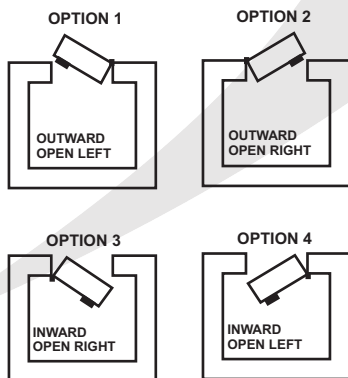
- Surface mount steel gate lock housing for LK30-1 tek locks
- Dimensions : 163mm length x 38mm width x 77mm depth



ELECTRIC LOCKS

LK40 Electric Latch Release - Inward Opening
LK42 Electric Latch Release - Outward Opening

A robust latch and strike kit for attachment to wooden or steel doors or gates which may be operated either manually or electrically.

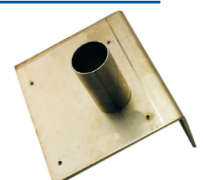


- Lockable button
- Sturdy construction
- All parts galvanised or brass
- 12VDC or 16VAC operation
- Microswitch for monitoring
- Left or right hand operation
- Ideal for wooden gates or steel gates (use LK41 kit)
- Mounting hardware provided



LK39 Wrought Iron Gate Kit - Left Hand Plate
LK41 Wrought Iron Gate Kit - Right Hand Plate

- Galvanised plate with pre-drilled and tapped mounting holes
- Stainless steel tube for key barrel



LOCKS

BRANCHES COUNTRYWIDE

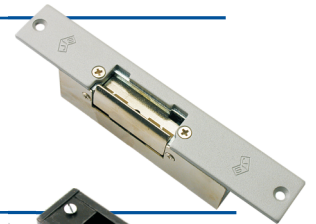
www.REGALSECURITY.co.za

LOCKS

ELECTRIC DOOR STRIKES

LK17 Striker Adj. Flush Mounted

- Flush mount striker lock
- Continuous action
- 12VDC or 12VAC operation



LK18 Electric Strike Housing

- Powder coated steel striker lock housing
- For surface mounting
- Dimensions : 175mm x 41mm x 42mm



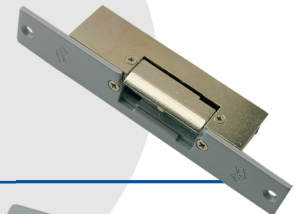
LK21 Surface Mounted Housing for Striker

- Black powder coated steel casing
- Facilitates surface mounting for LK20 and LK17 striker locks
- Dimensions : 145mm x 37mm x 26mm
- Includes plastic mounting spacers



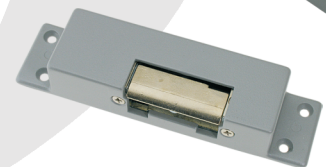
LK20 Striker Lock - Pre-Impulse Std

- Flush mount striker lock
- Pre-impulse action
- 12VDC or 12VAC operation



LK20-1 Elect Strike - Surface Mnt Std

- Surface Mount Striker Lock
- Includes surface mount plate and mounting spacers
- Pre-impulse action
- 12VDC or 12VAC operation



LOCKS

DOOR CLOSERS

LK13 Door Closer Heavy Duty

- Door closer for left or right opening swing doors
- Door width 1400mm to 1600mm
- Adjustable swing arm for a variety of installation applications
- Variable speed, angle and tension control
- Mounting hardware included



LK93 Door Closer Dorma Medium Duty

- Door closer for left or right opening swing doors
- For all standard internal doors
- Adjustable swing arm for a variety of installation applications
- Variable speed control
- Mounting hardware included



LK14 Door Closer Medium Duty

- Door closer for standard size wooden and metal hinge type doors
- Adjustable closing speed and latching speed
- Left or right hand door opening
- Adjustable arm link
- Mounting templates for left and right doors supplied



SECURITY LOCKS

LK79 Padlock -Tri-Circle 32mm Brass LK79-1 Padlock -Tri-Circle 50mm Brass

- Hardened steel shackle
- Solid brass lock case
- Supplied with 3 keys



LK79-3 Padlock Insurance - 75mm

- Steel ball locking mechanism
- Solid brass lock case



LK79-4 Padlock Discus Jaguar

- Deadbolt locking
- Stainless steel body
- Hardened steel closed shackle
- Brass cylinder with anti-drill plate



LK52-3 Night Latch-Black Narrow Style

- Black finish night latch lock
- Brass cylinder supplied with 3 keys
- Internal twist unlatch with locking button
- 5 pin tumbler



BRANCHES COUNTRYWIDE

www.REGALSECURITY.co.za