

ACCESS CONTROL

INTERCOMS - Video Doorphones

IC62-1 SP CCD B/W Video Doorphone
IC62-2 SP CCD B/W Video Doorphone - Alu

SECURI-PROD

- 4" video Black & White display
- Simple 5 wire connection
- IR Video gatestation for low light conditions
- 200m maximum distance (Use correct gauge cable)
- 220VAC power adaptor supplied
- 10W max power consumption



CC05 **COMMAX - Video Kit Peep Hole**



- Door-lock release button
- Electronic call facility
- 4" flat monitor
- A/V monitoring
- Communication with individual entrance station



INTERCOMS - Audio Doorphones

IC54-1 SP Intercom 1:1 220VAC
IC54-2 SP Intercom 1:1 220VAC - Alu

SECURI-PROD

- 220VAC
- Xylophone sound doorphone with 2 wires
- Adjustable volume control
- Designed for either desk use or wall mounting
- Electric doorkey release button
- Standard or aluminium intercom casing



IC54-3 SP Intercom 1:2 220VAC - Alu
IC54-4 SP Intercom 2:2 220VAC - Alu

SECURI-PROD

- 220VAC
- Xylophone sound doorphone with 2 wires
- Adjustable volume control
- Designed for either desk use or wall mounting
- Electric doorkey release button
- Standard or aluminium intercom casing
- Long distance communication



IC54-5 SP Intercom 1:3 Intercommunicating

SECURI-PROD

- 220VAC
- Intercommunicating between handsets
- Electric doorkey release button
- 4 wire system



IC42-5 Surface Box / Rainshield

- Mounting surface box
- Powder coated for durability



IC46 **COMMAX - Wire Free 2CH Set**



- FM wireless
- Complete in-home wireless intercom system
- Excellent sound clarity - no background hum or static
- Plug into any AC outlet - no installation
- LOCK function for continual one-way communication or monitoring



IC47 **COMMAX - Wire Free 3CH Each**
IC48 **COMMAX - Wire Free 4CH Pair**



- FM wireless
- Complete in-home wireless intercom system
- Excellent sound clarity - no background hum or static
- Plug into any AC outlet - no installation
- LOCK function for continual one-way communication or monitoring
- Additional pairs of intercoms may be added



BRANCHES COUNTRYWIDE

www.REGALSECURITY.co.za

ACCESS CONTROL

INTERCOMS - Audio Doorphones

IC41-1 COMMAX - 1:1 Intercom 12V



- Xylophone sound doorphone with 2 wires
- Effective Distance: 150m, 0.8mm copper wire
- Designed for either desk use or wall mounting
- Electric doorkey release button



IC41 COMMAX - 1:1 Intercom Kit IC42 COMMAX - 1:2 Intercom Kit



- Push button for door / gate release
- 4 wire connection
- 220VAC power input to handset

- 100m effective distance with 0.8mm copper wire
- Modern & slim design
- Superb speech reproduction
- Room to room conversation
- Duplex operation
- Xylophone call sound entry system



IC44 COMMAX - 1 Button Gate Station



- Gate station for 1 - 1 Kit (IC41 / IC42)
- Gooseneck or surface wall mount
- 2 wire connection
- Power supplied from handset
- Part No: RF-2A



IC49 COMMAX - 1:1 Battery Operated



- One - to - one communication
- Battery powered 6VDC (4 x AA batteries)
- Max current usage 45mA
- Electric door release button



IC38-2 BPT B-RED 12-18VDC Kit No PSU IC38-3 BPT B-RED 12-18VDC Kit W/ PSU



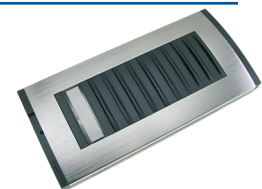
- 1 to 1 audio intercom system with handset, gate station and PSU.
- 220VAC input power and 18VDC output to hand set and intercom
- Connection for 12VAC, 0.5A impulse or continuous locks
- Speaker and microphone level adjustable



IC05-3 BPT - Targha E1 Entry Panel



- Max switching capacity of the micro-contact: 24V 1A
- Steel colour
- Current demand on the lighting module: 40mA, 17.5V
- 1 Button entry panel for gooseneck or wallmount



IC07-6 BPT - Lynea STD Handset YC/200



- Door-lock release button
- Electronic call facility
- Can accommodate the auxiliary services button YP1 and YAL to make the call note more powerful
- Used for non-communicating systems



IC07-7 BPT - Lynea Multi-Function YC/200



- Door-lock release button
- Electronic call facility
- Can accommodate the auxiliary services button YP1 and YAL to make the call note more powerful
- Accommodates YP3 3 button call modules
- Used for inter-communicating systems



BRANCHES COUNTRYWIDE

www.REGALSECURITY.co.za

ACCESS CONTROL

INTERCOM ACCESSORIES

ACCESS CONTROL

IC06-1 BPT - 3 Button Kit YP3



- For Lynea-series receivers (YC200A)
- Can be used for intercom calls or for activating auxiliary services
- Features 3 buttons with a common contact
- Max. Load to button contact when used for activating auxiliary services: 24V, 100mA



IC08 BPT - PSU E305G



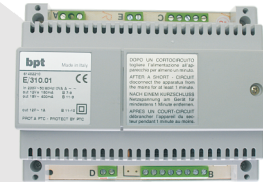
- Equipped with amplifier to regulate the audio volume
- Transformer powers the button illumination lamps
- Duo-tone call
- For use with all non-intercommunicating systems
- 4 phones per call button



IC09 BPT - PSU E310



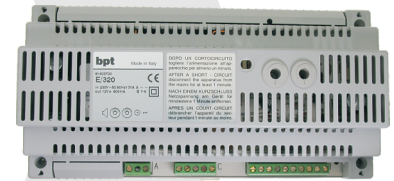
- Unit creates simple intercommunication systems with a maximum of 4 internal units
- Power supplier is equipped with an amplifier that regulates the audio volume
- Dual tone call from the entry panel
- The door lock release solenoid is activated by a relay contact



IC10 BPT - PSU E320



- Unit creates simple intercommunication systems with a maximum of 7 internal units to enable both communication between internal units and the entry panel
- Complete audio privacy
- Audio amplifier
- Timer for door release control



IC11 BPT - PSU A200R



- Unit equipped with a transformer capable of powering the HPC/1 entry panel and max 20 HPP/6 panels
- 2 two-tone call notes for entry panels
- Power supply and control of electric door lock via internal relay
- Facility for battery backup (AC/DC input)
- Four phones for unit



IC77 BPT - KHPS Push Button Kit



- Single modular push buttons for Targha gate stations
- Space for identification labels



IC77-1 BPT - KHPD Two Call Button Module



- Double modular push buttons for Targha gate stations
- Space for identification labels



IC81 BPT - VSE/200 Intercom Switch



- Selector allows installation of groups of intercom receivers in installation with standard receivers
- Continuous tone generator for internal calls between intercom units
- Permits internal conversation between intercom receivers, even during communication between the entry panel and another occupant



BRANCHES COUNTRYWIDE

www.REGALSECURITY.co.za

ACCESS CONTROL

INTERCOM MOUNTING

IC27 BPT - MP3 Mounting Plate

- Mounting plate for gooseneck
- Powder coated for durability
- Used with Targha range of audio entry panels
- Powder coated
- 210mm H x 106mm W x 37mm overhang



IC28 BPT - MP6 Gooseneck Anti-Theft

- Anti-vandalism housing - gooseneck mount
- Powder coated for durability
- Used for Targha range of audio entry panels
- 210mm H x 1114mm W x 45mm internal depth



IC29 BPT - MP7 Wall Mount Anti-Theft

- Anti-vandalism housing - wall mount
- Powder coated for durability
- Used for Targha / E-series range of audio entry panels



IC45 COMMAX - Rainshield IC45-1 COMMAX - R/Shield Galv. P/Coat

- Gooseneck mount for Commax gatestation
- Powder coated for durability
- Used with Commax 1 -1 entry panels
- 167mm H x 112mm W x 62mm max overhang



IC45-2 COMMAX - Rainshield Anti-Theft

- Anti-vandalism housing – gooseneck mount
- Powder coated for durability
- Used with Commax 1 -1 entry panels
- 140mm H x 114mm W x 63mm max overhang



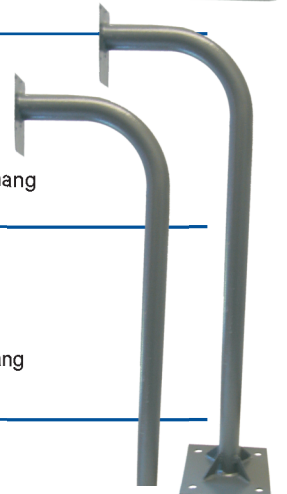
IC58 BPT - Rainshield

- Gooseneck mount for Targha / E series gate stations
- Powder coated for durability
- 223mm H x 112mm W x 65mm max overhang



IC50 Gooseneck - No Base Plate IC50-3 Gooseneck No Base Plate Galv. IC50-4 Gooseneck No Base Plate S/Steel

- Gooseneck for all intercom gate stations
- Powder coated for durability
- Concrete mount base
- 51mm diameter x 1355mm total height x 280mm overhang



IC50-1 Gooseneck - With Base Plate

- Gooseneck for all intercom gate stations
- Powder coated for durability
- Surface mounting base plate
- 51mm diameter x 973mm total height x 280mm overhang
- 200mm x 200mm base plate

BRANCHES COUNTRYWIDE

www.REGALSECURITY.co.za

Due to continuous improvements of these products, certain specifications may be altered without notice. E&OE

ACCESS CONTROL

BIOMETRIC READERS

LK170 Fingerprint Reader 1500 User

- User Capacity: 1500 Fingerprints
- Transaction storage: 30 000 Records
- Verification Mode: 1:1 or 1:N
- Access Mode: Fingerprint and/or Code
- Communication: TCP/IP, RS485 or RS232
- Operation: Stand-alone or On-line
- Input Voltage: 9-24V DC
- Current: 50mA (idle), 400mA (working)
- Includes Access Control and Time & Attendance Software



LK171 Fingerprint Reader 2800 User

- User Capacity: 2800 Fingerprints
- Transaction storage: 50 000 Records
- Verification Mode: 1:1 or 1:N
- Access Mode: Fingerprint and/or Code
- Communication: TCP/IP, RS485 or RS232
- Operation: Stand-alone or On-line
- Input Voltage: 9-24V DC
- Current: 50mA (idle), 400mA (working)
- Includes Access Control and Time & Attendance Software



EXIT BUTTONS / SWITCHES

SW17 Push Button - Gate Decal NO/NCn

SW17-1 Push Button - Exit Decal NO/NC

- N/O and N/C contacts
- Rating 0.5A at 12VDC
- Large button with Bell, Gate or Exit decal

SECURI-PROD



SW165 No Touch Exit Sensor

- No touch / touch free exit sensor
- Optical Infrared technology
- Detection range from 1 to 100mm
- IP-55 ingress protection with 304 stainless plate
- Red / blue status LED



BRANCHES COUNTRYWIDE

www.REGALSECURITY.co.za

ACCESS CONTROL

TAG SYSTEMS

LK89 Supakey - Keypad & Tag (80 User)



- 125KHz passive proximity
- Up to 80 users - optional 4 digit pin
- LED display: Present Tag, Access Denied / Allowed
- Buzzer with 3 volume settings
- Tag - IP68 Rating
- Relay Unit with internally mounted relay lock electronics
- Tamper-proof



LK90 Supakey - Teardrop Access Tags



- Billions of unique codes
- Waterproof and robust
- IP68 Rating



LK77 Dallas TAG System - 250 User

- Secure key system
- Replaces traditional key operated switches
- In-place programming
- Up to 250 individually identifiable tokens



LK77-1 Dallas TAG - each

- Master token used to control programming of each system
- Each tag has its own unique identifiable code
- Used with LK77 Dallas TAG System



LK146 DorAble Stand Alone Reader - Standard



- Input Power Supply: 12VAC/DC only
- Operating Frequency: 125kHz
- Coding: 64-bit Manchester
- Maximum 30 users including 2 masters can be added

- Visual indication - Tri-colour LED; Audible indication: Buzzer
- Packaging Formats: ABS blend; UV resistant; IP54; Stainless Steel - vandal resistant panel mount



**LK144 Proximity Tag ISO
LK143 Proximity Card ISO**



- Standard card or tag format can be used with a variety of access readers
- Reading Range: TAG - 50mm
CARD - 70mm



**LK160 LATTICE Contr.V1 Flush & Surf
LK160-1 LATTICE Slave Head Flush & Surf
LK160-2 LATTICE Takeup HD & Latticewar
LK 161 ZAPTAG Grey Single Unit
LK 162 SOLO/LATTICE R/Shield**

- Standard alone / network connected controller head
- 1000 user tag capacity
- Up to 31 slave readers on network
- 2 output channels - potential free relay plus open collector output.
- Free-exit input plus door-sense input
- PC interface via the take-up reader and software.



LK163 SOLO Controller Flush & Surf

- Stand alone access control unit
- Up to 50 tag users
- Single potential free relay output
- Door sense and free exit inputs
- Door timer function for alarm open and forced



ACCESS CONTROL

BRANCHES COUNTRYWIDE

www.REGALSECURITY.co.za

Due to continuous improvements of these products, certain specifications may be altered without notice. E&OE

ACCESS CONTROL

KEYPADS

- LK91** **SMARTGUARD Keypad - 1000 Codes**
- LK90-2** **SMARTGUARD Rain Shield (s/stl)**
- Stand alone keypad for cost effective keyless access control
 - 12 to 24VAC / DC
 - Up to 1000 unique 1-10 digit codes
 - 1 Relay output (pulsed or latched)
 - Fully programmable via front panel
 - Various panic conditions, including duress & panic



- LK92** **Keypad - Tamper Proof**
- Prevents tampering or hot wiring of relay
 - 12VDC or 24VAC operation
 - Programmable master code with 6 user codes
 - Relay time programmable in seconds or latch mode
 - Power and relay LED indication
 - Weatherproof housing



- LK92-3** **Keypad - Stand Alone**
- Stand alone budget keypad
 - 12 to 24AC or DC operation
 - 7 Programmable user codes
 - 2 output relays latch or timed in seconds
 - Incorrect code lockout - 4 attempts
 - Surge protection



- LK54** **KEYPRO Keypad - 8 Codes**
- Double-relay keypad in durable, weatherproof housing
 - 4 - 13 digit access codes for 8 users
 - Codes can be issued for temporary access
 - Wrong code lockout
 - 2 relays and anti-tamper switch
 - Programmable panic facility



ACCESS CONTROL

ENTRANCE SYSTEMS

SD06-1 Door Entry System

SECURI-PROD

- Retro-reflection type
- Sensing range: 0-7m
- Adjustable speaker volume
- Sounding time: 3-30 seconds adjustable
- IR LED light source
- Input current 9-15VDC



SD06-2 Door Entry Counter

SECURI-PROD

- Counter for door entry system
- Add, subtract and reset functions
- 12VDC power supply included
- Non-directional



SD06 Mini Sensor Alarm

EVERSPRING

- Mini alarm with built in passive and buzzer
- Powered by internal 9V battery
- Detection Coverage: Horizontal 8m, Vertical 3m
- Detection Angle: 60 degrees (Vertical), 110 degrees (Horizontal)



ACCESS CONTROL